

LucidShape Thermic Hot Spot Analysis for High Beam Headlamps

Paper #020-1

February 2016

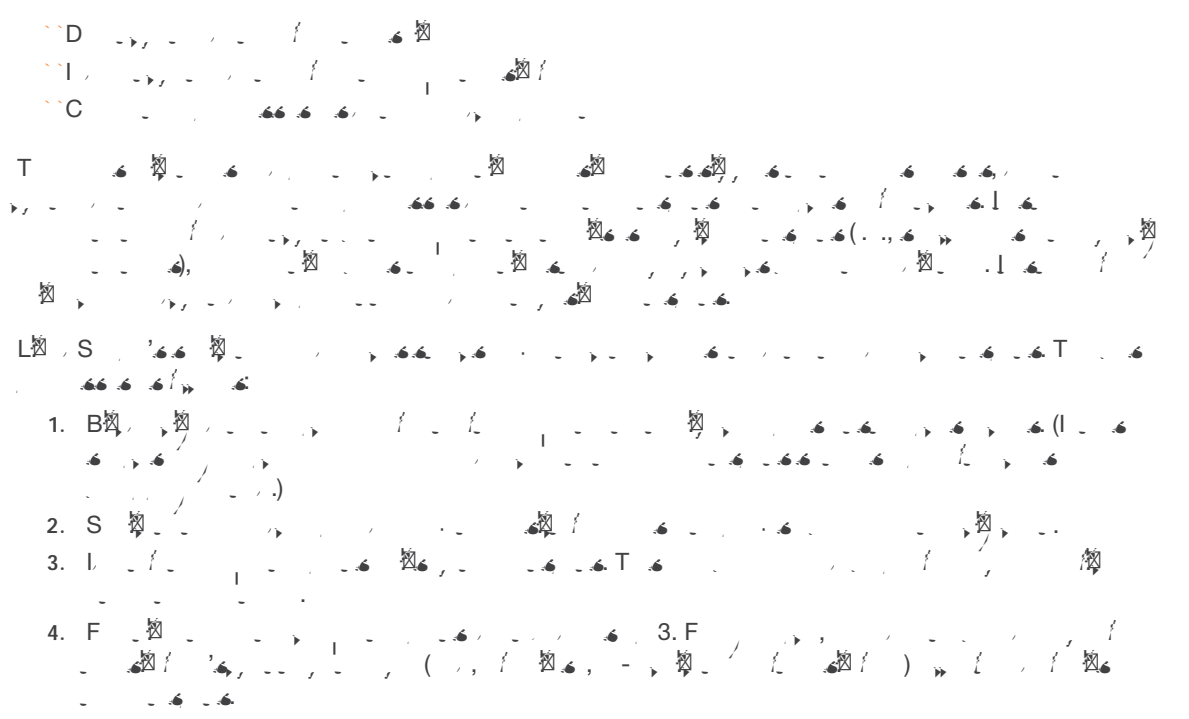
Author

Steffen Ragnow

Senior Engineer

Abstract

© softwareGenerally, heat flow inside a headlamp cavity is influenced by three sources:



Hot Spot Analysis in Practice

H, F, 3, 357000, T

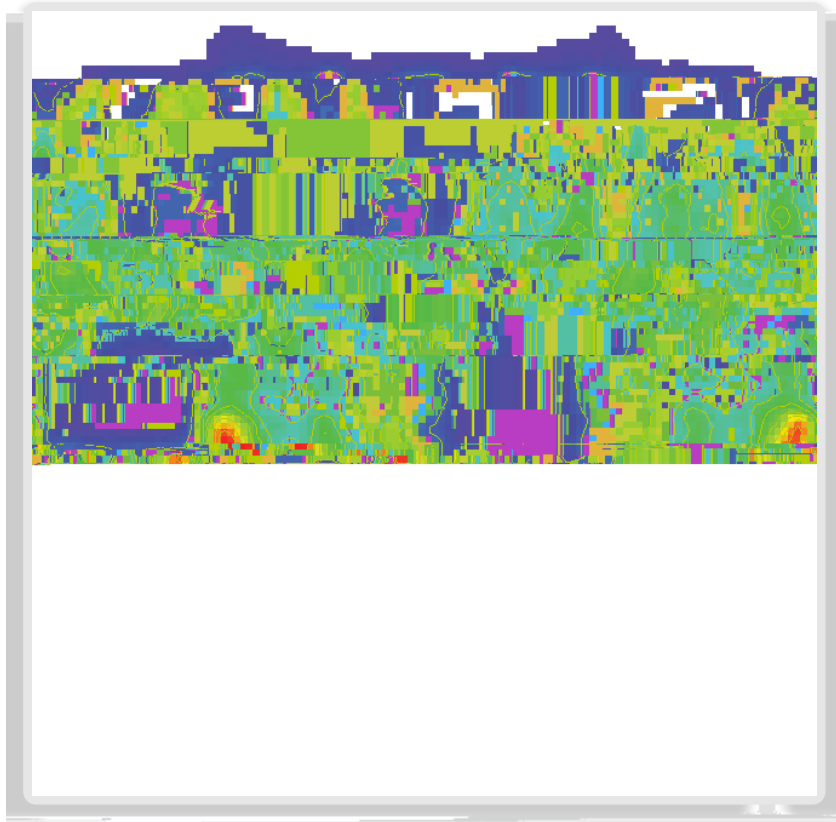


Figure 3. Lux distribution at 80 mm in front of high beam reflector. Hot spots reside in the red regions.

A (F, 4)

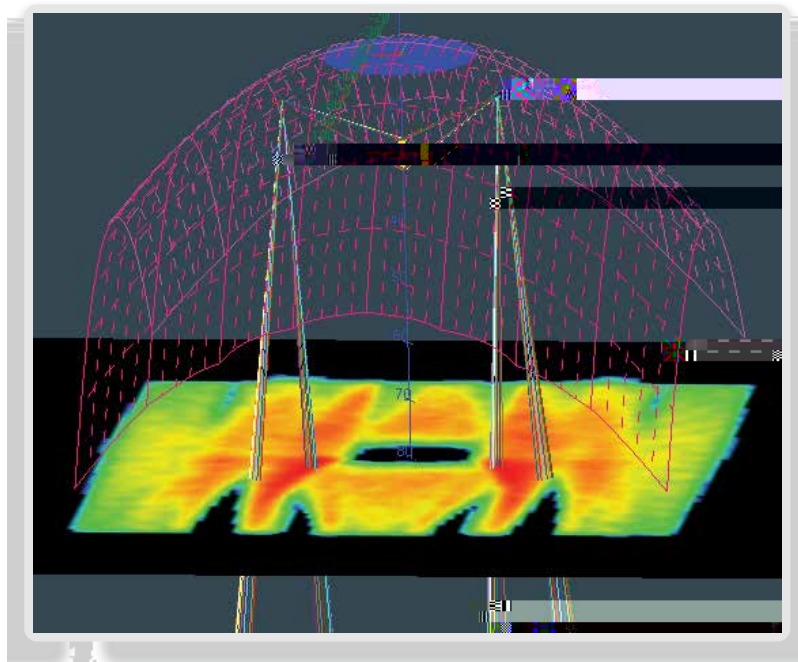


Figure 4. High Beam reflector with illuminated lux sensor (here in log scale) and interactive rays

I 3D T
 N F, 5

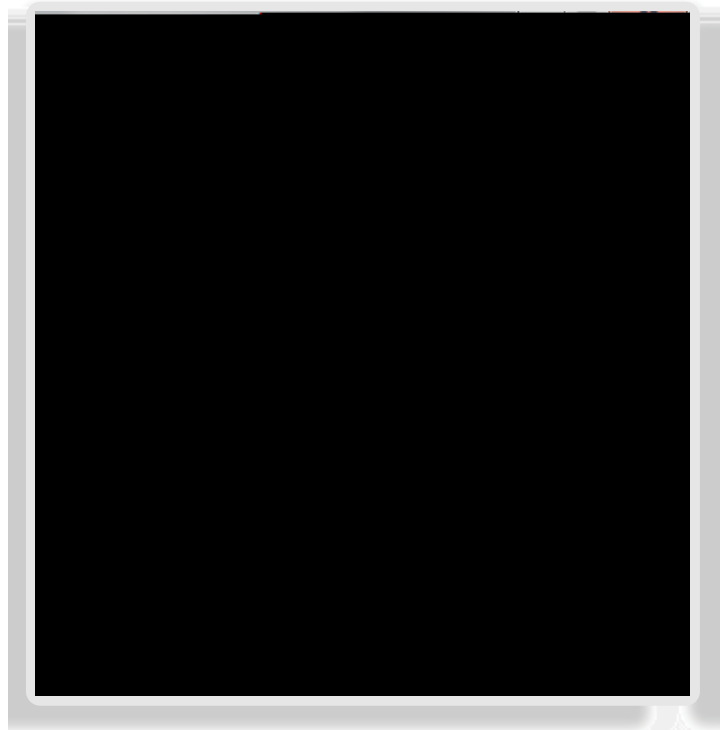


Figure 5. A critical surfaces construction dialog box

A -3,3 -9,9 . R
 85, 25)

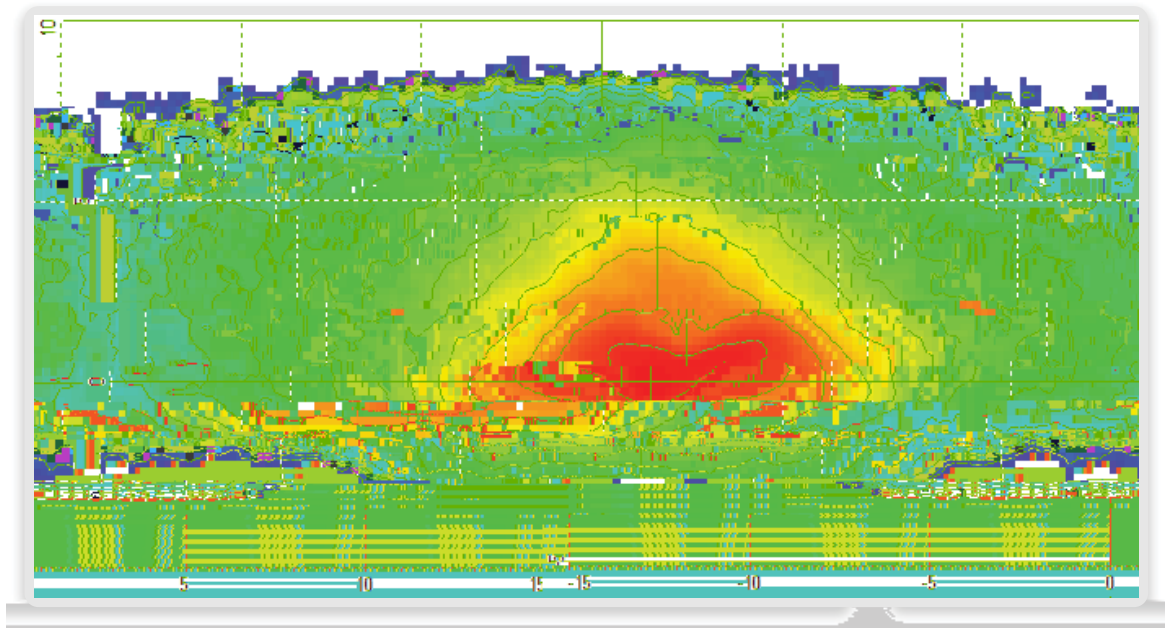
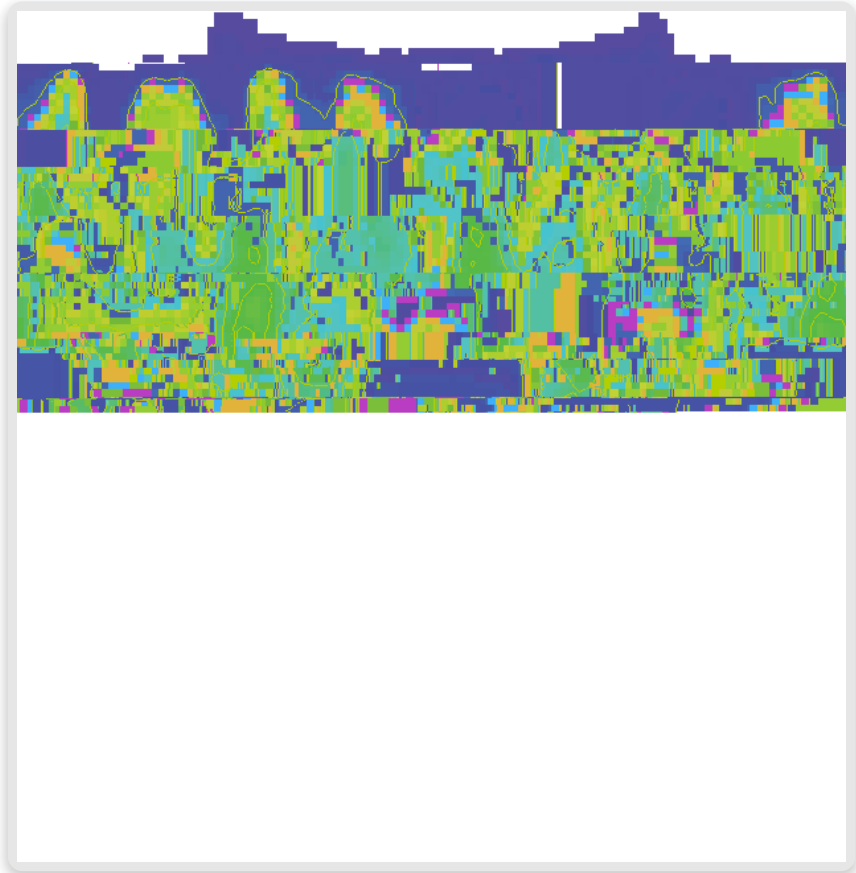


Figure 6. Candela distribution of de-focused high beam reflector

O... 250000...
 T... F... F... 7... F... 3.



F, 7. L 80

Conclusion

W... L... S...
 U...
 A...

To Learn More

F... L... S... S... O... S...
 G... (626) 795-9101... 8:00 -5:00 PST, ...
 @...