

What's New in LightTools Version 2024.03

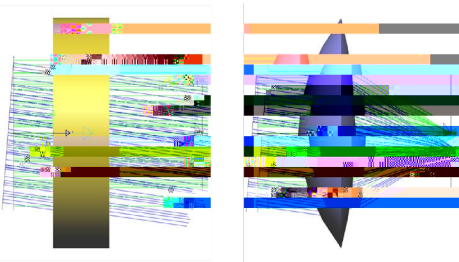
Upgrade Your Illumination Optics Designs



LightTools 2024.03 introduces a new sequence ray tracing engine, a global optimization engine, and an environmental analysis tool. These features allow for more efficient and accurate simulation of complex optical systems, including those with thin films and environmental effects.

Sequence RayTracing

The new sequence ray tracing engine allows for the simulation of multiple light sources and detectors in a single run. This is particularly useful for complex systems where multiple light sources are used to illuminate a target. The engine also supports the simulation of multiple detectors, allowing for the analysis of the spatial distribution of light on the target.

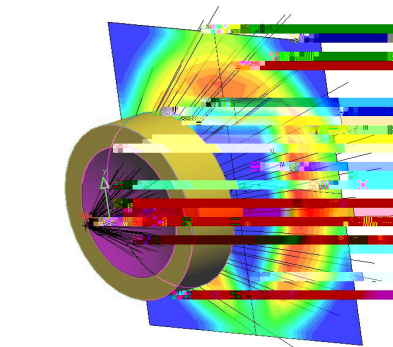


Global Optimization Engine

The global optimization engine allows for the automatic optimization of optical systems. This is useful for finding the best design parameters for a given system, such as the shape and position of lenses and mirrors. The engine can optimize a wide range of parameters, including surface curvatures, thicknesses, and positions.

Environmental Analysis

The environmental analysis tool allows for the simulation of the effects of environmental conditions on optical systems. This includes the simulation of temperature, humidity, and vibration. The tool can be used to predict how these conditions will affect the performance of an optical system, allowing for the design of more robust and reliable systems.



Thin Film Enhancements

The thin film enhancements allow for the simulation of the effects of thin films on optical systems. This includes the simulation of the effects of thin film coatings on the reflectance and transmittance of surfaces. The enhancements also allow for the simulation of the effects of thin film growth and degradation on the performance of an optical system.

